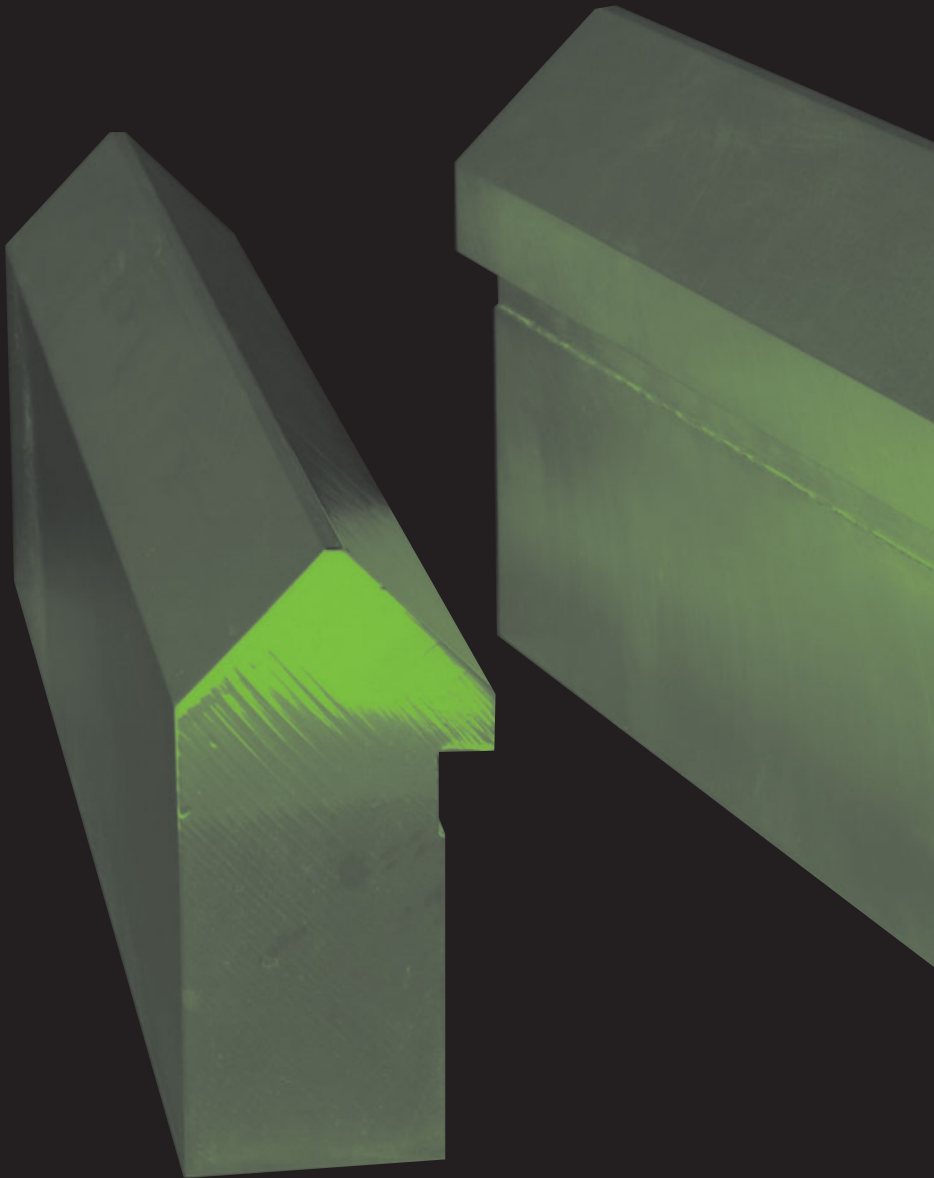


SMITH-RAIL



Hardened Steel Rails for Heavy Duty Applications

Use with **SMITH-TRAX®**
Bearings to quickly design
and fabricate precision
material handling systems

ABC
accurate
bushing
company

ABC Headquarters
443 North Avenue
Garwood, NJ 07027

tel. **908.789.1121**
fax. **908.789.9429**

sales@[accuratebushing.com](mailto:sales@accuratebushing.com)
sales. **800.932.0076**

www.accuratebushing.com
www.smithbearing.com

SMITH - RAIL Hardened Steel Rails

Precision Manufactured **SMITH-RAILS** drastically reduce system design time and sourcing cost of guidance systems for material handling equipment supported by heavy-duty SMITH-TRAX® track rollers.

SMITH-RAILS are fabricated from 180,000 PSI tensile strength steel in three profiles to maximum lengths of 12 ft. Rail-Bearing contact surfaces are hardened to 60-65 Rc. to match SMITH-TRAX® V-groove, plain and flanged bearings. Maximum (point contact) rail loadings up to 71,500 lbs. per roller are allowed. Hardened rails are straight and twist-free.

ABC will cut standard 12 ft. lengths to your specification.
ABC will also drill, counter bore and tap mounting holes if desired.

MOUNTING OPTIONS

OPTION 1 Clearance Holes for Cap Screws

Clearance holes are spaced 12" on center to accommodate cap screws (metric holes spaced 300mm on center). See Dimension Chart for fastener size (Fasteners NOT included). Add "-1" to end of part number for this mounting option. (See Page 4)

OPTION 2 Clearance Holes with Counterbore for Socket Head Cap Screws

Clearance holes with counterbore are spaced 12" on center to accommodate socket head cap screws and hi-collar lock washers (metric holes spaced 300mm on center). See Dimension Chart for fastener size. (Fasteners NOT included). Add "-2" to end of part number for this mounting option. (See Page 4)

OPTION 3 Tapped Holes (for Cap Screws)

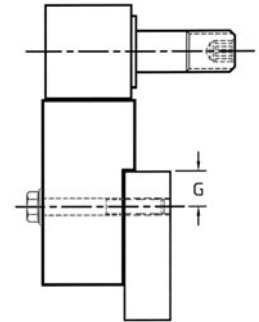
Tapped holes are spaced 12" on center (metric holes spaced 300mm on center). Models SRV and SRP rails are through-drilled and tapped on side of rail; Model SRHP is tapped on bottom. See Dimension Chart for fastener size. (Fasteners NOT included). Add "-3" to end of part number for this mounting option. (See Page 4)

OPTION 0

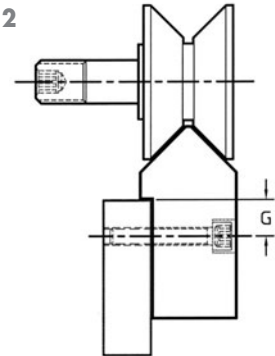
If no mounting holes are required, Add -0 to end of part number for this mounting option.

Typical Mounting Arrangements

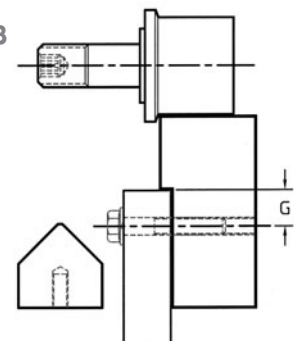
Option 1



Option 2

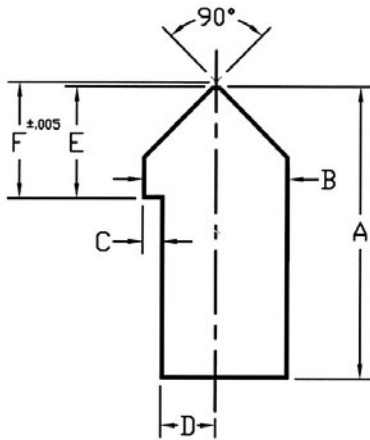


Option 3

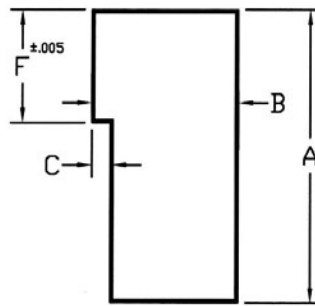


PROFILE DIMENSIONS

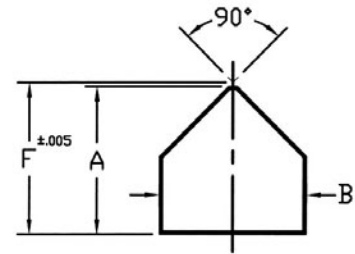
SRV



SRP



SRHP



Mounting holes are 12" on center and equally spaced from rail end.
For Metric rails, holes are spaced 300mm on center equally spaced from rail end.

Part Number	A	B	C	D	E	F	G	Mounting		
	in.	in.	in.	in.	in.	in.	in.	Option 1 Clearance Holes for	Option 2 Drilled & Counterbored for	Option 3 Tapped Holes
SRV-4XXXX	2.000	1.000	0.125	0.375	0.750	0.780	0.500	1/4 Cap Screw	1/4 Soc. Hd. Cap Screw	1/4-20 UNC
SRV-1XXXX	3.000	1.500	0.250	0.500	1.000	1.047	0.750	3/8 Cap Screw	3/8 Soc. Hd. Cap Screw	3/8-16 UNC
SRV-2XXXX	4.000	2.000	0.250	0.750	1.500	1.562	1.000	1/2 Cap Screw	1/2 Soc. Hd. Cap Screw	1/2-13 UNC
SRP-4XXXX	2.000	1.000	0.125	-	-	0.780	0.500	1/4 Cap Screw	1/4 Soc. Hd. Cap Screw	1/4-20 UNC
SRP-1XXXX	3.000	1.500	0.250	-	-	1.047	0.750	3/8 Cap Screw	3/8 Soc. Hd. Cap Screw	3/8-16 UNC
SRP-2XXXX	4.000	2.000	0.250	-	-	1.562	1.000	1/2 Cap Screw	1/2 Soc. Hd. Cap Screw	1/2-13 UNC
SRHP-4XXXX	1.000	1.000	-	-	-	1.030	-	-	-	1/4-20 UNC
SRHP-1XXXX	1.500	1.500	-	-	-	1.547	-	-	-	3/8-16 UNC
SRHP-2XXXX	2.000	2.000	-	-	-	2.062	-	-	-	1/2-13 UNC

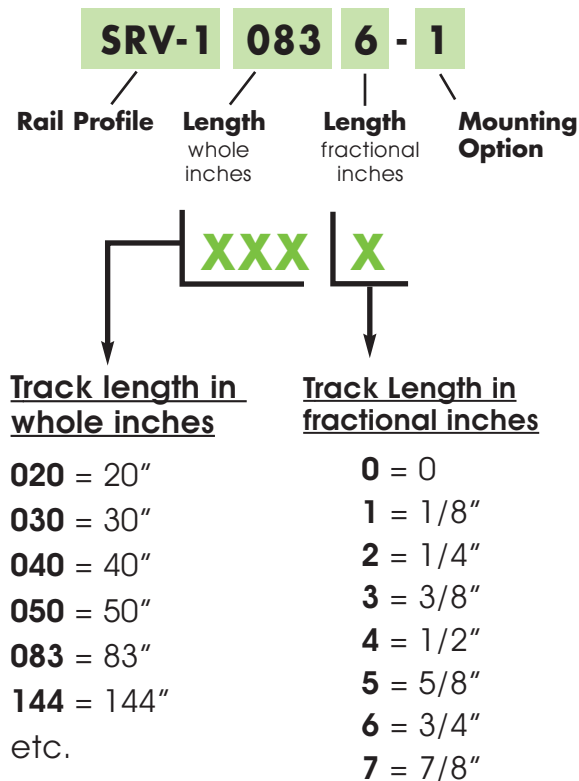
Part Number	A	B	C	D	E	F	G	Mounting		
	mm.	mm.	mm.	mm.	mm.	mm.	mm.	Option 1 Clearance Holes for	Option 2 Drilled & Counterbored for	Option 3 Tapped Holes
MSRV-1XXXX	75	40	6	14	27	28.2	20	M10 Cap Screw	M10 Soc. Hd. Cap Screw	M10 x 1.5
MSRV-2XXXX	100	50	6	19	39	40.6	25	M12 Cap Screw	M12 Soc. Hd. Cap Screw	M12 x 1.75
MSRP-1XXXX	75	40	6	14	27	28.2	20	M10 Cap Screw	M10 Soc. Hd. Cap Screw	M10 x 1.5
MSRP-2XXXX	100	50	6	19	39	40.6	25	M12 Cap Screw	M12 Soc. Hd. Cap Screw	M12 x 1.75

INFORMATION

The part number for a specific piece of **SMITH-RAIL** is determined by the **rail profile**, the **rail length**, and desired **mounting option** (See Profile Dimensions, Page 3; Mounting Options, Page 2). Maximum rail section length is 144". Length tolerance is $\pm 1/16"$. Mounting hardware (cap screws, lock washers, etc.) NOT INCLUDED.

Example (inches):

To complete part number, replace "XXXX" with whole and fractional track lengths, and mounting option: 1, 2, 3 or 0 (for no holes).

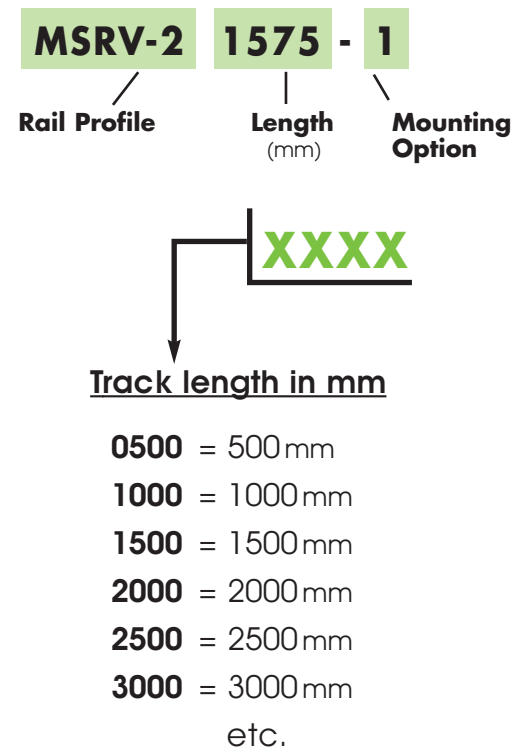


144 = 144" (Maximum track length)

- For example, to specify a 3" high V-track 83-3/4" long with mounting option #1, the part # is **SRV-10836-1**
- Customized rails are available in any length; please contact factory

Example (millimeters):

To complete part number, replace "XXXX" with track length dimension in millimeters, and mounting option: 1, 2, 3 or 0 (for no holes).



3600 = 3600mm (Maximum track length)

- For example, to specify a 100mm high V-track 1575mm long with mounting option #1, the part # is **MSRV-21575-1**
- Customized rails are available in any length; please contact factory